

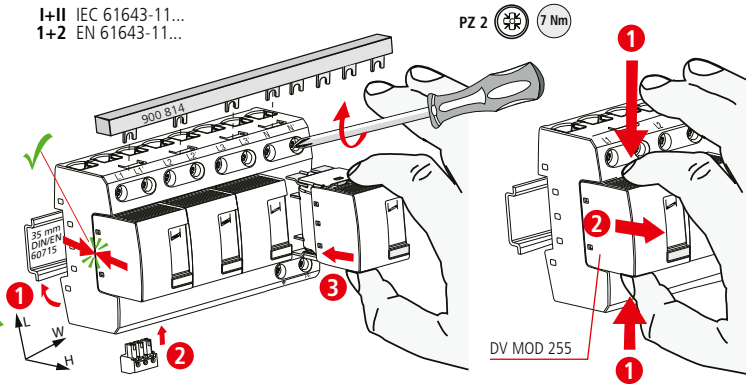
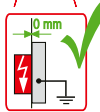


DEHNventil modular DV M TNS 255 (FM)

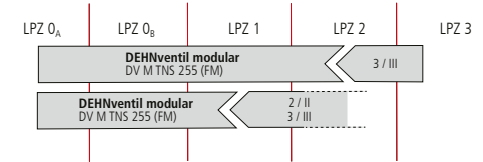
- DE Einbauanleitung
- GB Installation instructions
- IT Istruzioni di montaggio
- FR Instructions de montage
- NL Montagehandleiding
- ES Instrucciones de montaje
- PT Instruções de montagem
- DK Monteringsvejledning
- SE Monteringsanvisning
- FI Asennusohje
- GR Οδηγίες συναρμολόγησης
- PL Instrukcja montażu
- CZ Návod k montáži
- TR Montaj kılavuzu
- RU Инструкция по монтажу
- CN 安装说明
- HU Szerelési útmutató
- JP 設置説明書



I+II IEC 61643-11...
1+2 EN 61643-11...

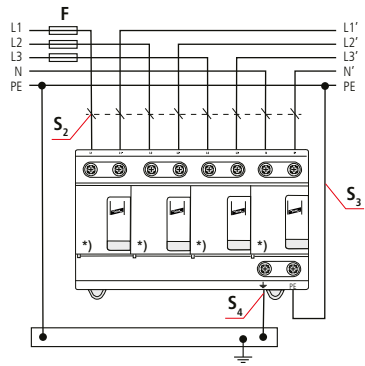


U_N / Tol.: $\pm 10\%$	230 / 400 V (50/60 Hz)
U_C	264 V (50/60 Hz)
$I_{fl}^{(1)}$	50 kA _{rms}
I_{SCCR}	50 kA _{rms}
I_{imp} 10/350 μ s	25 kA (L,N \Rightarrow PE); 100 kA (L1+L2+L3+N \Rightarrow PE)
max. I_{g2}	125 A gG
max. I_{g3}	315 A gG
θ	-40°C ... +80°C (... +60°C $\text{2)$)
I_{PE}	<< 10 μ A
Φ	5% ... 95%
IP $\text{4)$	20
L x W x H	90 mm x 144 mm x 73 mm

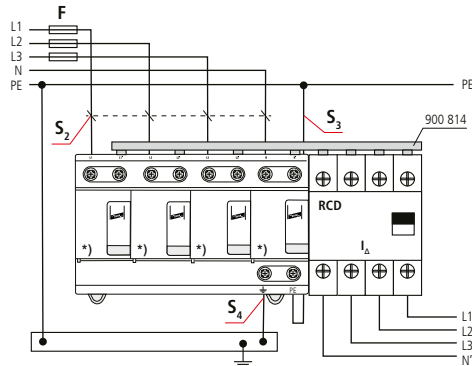


min. \square L1, L1', L2, L2', L3, L3', N, N', PE, \downarrow	10 mm ²	
max. \square L1, L2, L3, N, PE	35 mm ²	50 mm ²
max. \square L1', L2', L3', N', \downarrow	25 mm ²	35 mm ²
\square \triangle	16 mm ² Cu	≥ 15.5 mm

2) TNS



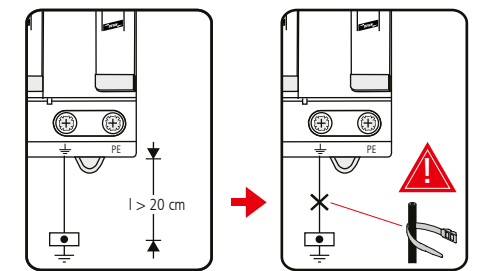
*) DV MOD 255



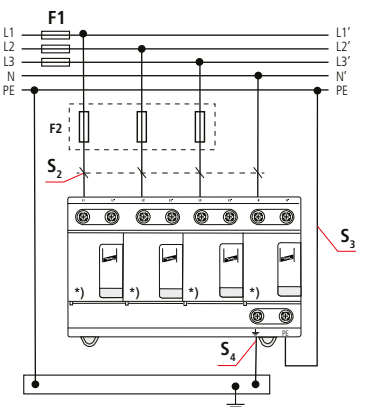
*) DV MOD 255

DEHNventil modular DV M TNS 255 (FM)	
$F \leq 125$ A gG	
$F > 125$ A gG	

F A gG	S ₂ / mm ²	S ₃ / mm ²	S ₄ / mm ²
25	10	16	16
35	10	16	16
40	10	16	16
50	10	16	16
63	10	16	16
80	16	16	16
100	25	16	16
125	35	16	16



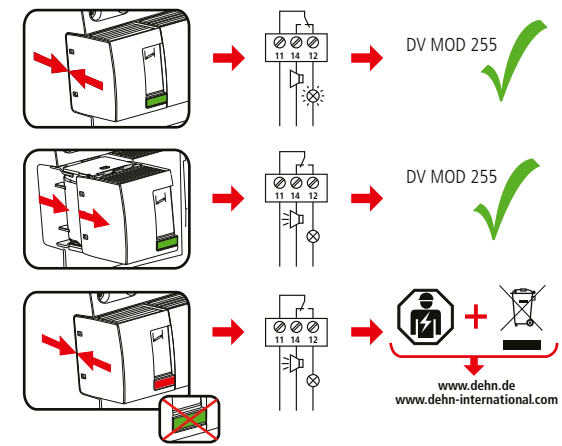
3) TNS



*) DV MOD 255

DEHNventil modular DV M TNS 255 (FM)	
$F1$	$F1 > 315$ A gG
$F2$	$F2 \leq 315$ A gG
$F2$	$F1 \leq 315$ A gG

F1 A gG	S ₂ / mm ²	S ₃ / mm ²	S ₄ / mm ²	F2 A gG
25	10	16	16	---
35	10	16	16	---
40	10	16	16	---
50	10	16	16	---
63	10	16	16	---
80	10	16	16	---
100	16	16	16	---
125	16	16	16	---
160	25	25	25	---
200	35	35	25	---
250	35	35	25	---
315	50	50	25	---
>315	50	50	25	315



DEHNventil modular DV M TNS 255 FM	
U_N / I_N	AC: 250 V / 0.5 A
	DC: 250 V / 0.1 A 125 V / 0.2 A 75 V / 0.5 A
	max. 1.5 mm ²



